

Agtron[®] Mt. Pleasant

Steffes Group Auction Facility
2245 East Bluegrass Road, Mt. Pleasant, IA

THURSDAY, MARCH 18 | 10AM 2021

Please join us for this **live multi-ring** equipment auction with online bidding available. Loading assistance will be available after 2PM on sale day. Cars and pickups may enter the grounds at 12:00 Noon for self-loading. Registration, terms, and details at SteffesGroup.com. Equipment must be removed by Friday, March 26, 2021, unless other arrangements are made. Contact 319.385.2000 for information, new consignments or changes!

HAY EQUIPMENT REDUCTION - WILLIAM FORTIN, 319.457.0303



WINDROWER

2016 Massey Ferguson WR 9870, 16', self-propelled, suspended cab, deluxe seat, CAH, guidance complete, Topcon C3000 receiver (S/N 1094-11838), 171 sep./262 eng. hrs., DEF system, sells w/Massey Ferguson MF 9159 Razer Bar 16' head (S/N M9195OFHRH4402), metal rollers, 620/75R26 fronts, 16.5L-16.1SL rears, S/N M98700F4S13195 (one owner, purchased new in 2018 from Graber Services)

BALE WAGON & WRAPPER

2013 Tube Line 980, bale wagon, 8-bale, self-load/unload
2019 Tube Line TL 1000R, bale wrapper, 3 pt., individual bale, S/N 1710039

HAY RAKE

2015 Kuhn GA 9032, twin rotary rake, hyd. drive, pull-type, S/N B0049

SEEDER

Brillion SST-1201, 10', drawbar, ground-driven, approx. 1,135 acres, S/N 153915

OTHER EQUIPMENT

(24) Gauge Wheels, w/brackets, off of JD 7200 planter
(2) Poly Saddle Tanks, fits JD 7000 series planter

TRACK TRACTORS

2012 John Deere 9510RT, 1,742 hrs., PowerShift, premium cab, 5 hyd., BB, leather interior, 7" color touch display, guidance ready, deceleration button, (2) 365 lb. weights on front idler wheels, (26) front suitcase weights, S/N 1RW9510RJCP901613

1998 Caterpillar Challenger 55, 4 hyd., 3 pt. w/quick hitch, 1000 PTO, return flow, new cab kit, 16" tracks, (10) front weights, (24) intermediate weights, S/N 7DM01478

MFWD TRACTOR

2012 John Deere 8225R, 2,978 hrs., MFWD, PowerShift, 4 hyd., 3 pt. w/quick hitch, Lg. 1000 PTO, standard axle, (4) 365 lb. rear inner wheel weights, cloth interior, guidance ready, 7" display, deceleration pedal, 480/80R46 rear duals, S/N 1RW8225RHAP004671

4WD TRACTORS

1992 John Deere 8760, shows 6,489 hrs., 4WD, CAH, S/N RW8760H004747 (Owner states engine OH 1,200 hrs. ago)

1989 Case-IH 9180, 10,300 hrs., 4WD, Big Cam Cummins, 12 speed powershift, CAH, 3 hyd., 3 pt. w/quick hitch, hammer strap drawbar, 30.5L-32 inside tires, 24.5L-28 outside duals

ANTIQUE TRACTOR

Farmall H, M&W overdrive, 1953 Super H front end, 1949 rear end (restored, Seller states engine is stuck)

FRONT END LOADER

John Deere 640, front loader, 6' quick attach bucket, sells w/mounts for JD 6300 tractor

online bidding available

PLANTERS & DRILLS

1990 John Deere 7200 MaxEmerge II, planter, 16x30", 2 pt., front fold, ground-driven, insecticide, liquid in-furrow, bean & corn discs, Dickey John monitor & box, double disc openers, markers, S/N A07200D501550

John Deere 7000, planter, 6x30", finger pick-up, corn & bean meters, insecticide boxes, Dickey John monitor

Case-IH 1200, planter, 12x30", individual boxes, no monitor

2006 John Deere 455, grain drill, 30', ground-driven, pull-type, double disc openers, 10" spacing, Yetter markers, marker tires, S/N N00455X705345

TILLAGE EQUIPMENT

2009 John Deere 2310, field finisher, 34', 10" sweeps, 5-bar coil tine harrow

John Deere, cultimulcher, 10', pull-type, hyd. raise/lower, 9.5L-15 tires

Burch, disc, 12'

Redline, harrow, 30', pull-type, hyd. fold, gauge wheels on wings



SPRAYERS & SPREADER

2001 Case-IH SPX4260, 4,475 hrs., self-propelled sprayer, 90' boom, 20" spacing, 1,200 gal. SS tank, Ag Leader Integra display, 5-body nozzles, 5-section shut-off, no auto boom height, light bar steering, SS plumbing, 380/90R46 row crop tires, S/N JFG0003260

Tyler Patriot WT, 3,759 hrs., self-propelled sprayer, 75' boom, 20" spacing, 750 gal. poly tank, Raven display w/Raven Switch Pro, Raven Auto-Steer, receiver, AM/FM/CD radio, 4WD, JD diesel eng., spring susp., 5-nozzle spray bodies, chem. inductor, rinse tank, foam markers, 12.4-42 tires, S/N 7732197B02347 (Owner states one season on tires & (2) new wheel motors)

2009 Meyers 7500, manure spreader, tandem axle, 540 PTO, 3rd auger, 425/22.5 tires



LIST CONTINUES ON REVERSE SIDE

ATTENTION CONSIGNORS

CONSIGNMENTS WILL BE ACCEPTED ON:

Monday, March 1st - Friday, March 5th (8AM - 5PM)

Monday, March 8th - Thursday, March 11th (8AM - 5PM)

Items must be on lot by Thursday, March 11th

(Week before sale)

SteffesGroup.com

Steffes Group, Inc. | 2245 East Bluegrass Road, Mt. Pleasant, IA 52641 | 319.385.2000

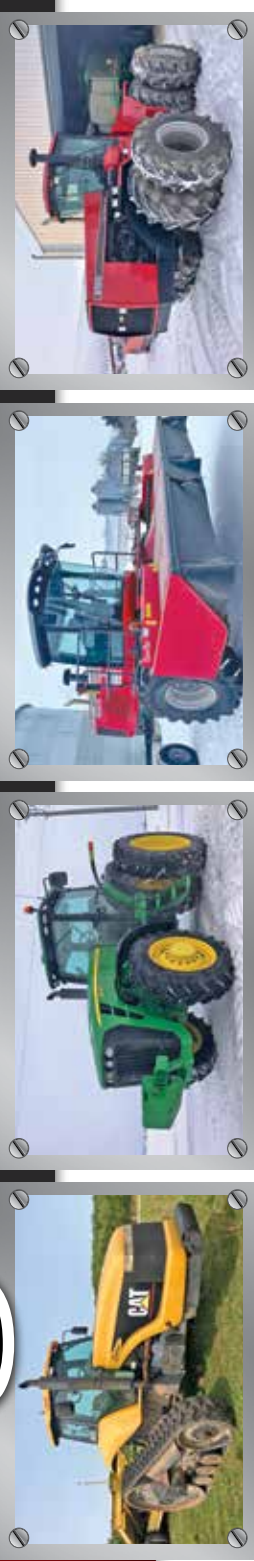
STEFFES



TERMS: All items sold as is where is. Payment of cash, check or credit card must be made sale day before removal of items. Statements made auction day take precedence over all advertising. \$35 documentation fee applies to all titled vehicles. Titles will be mailed. IA Sales Tax laws apply. Canadian buyers need a bank letter of credit to facilitate border transfer.

Agtron® Mt. Pleasant

THURSDAY, MARCH 18 | 10AM
2021



Agtron Spring 2021

March 10 West Fargo

March 18 Mt. Pleasant

March 18 Litchfield

NOOS COMING

Closes March 18: Norman County, MN Land Online Auction - Perley, MN
 Closes March 18: Darwin & Kris Panning Farm Retirement Online Auction - Hamburg, MN
 March 19: Donovan VanderVoort Farm Retirement Auction - Hector, MN
 Closes March 19: Myrtle Laughlin Estate Farm Equipment Auction - Wapello, IA
 Closes March 23: Gary & Cindy Haman Farm Retirement Auction - Fiolette, ND
 Closes March 23: Multi-Party Construction Equipment Online Auction - Mt. Pleasant, IA
 Closes March 23: Tom & Jeani Smith Farm Retirement Online Auction - Hartford, IA
 Closes March 23: Johnson Family Estate Online Auction - Litchfield, MN
 Closes March 24: TLM Farms, Inc. Retirement Auction - Duncombe, IA
 Closes March 24: Lauren & Lynette Wold Farm Retirement Online Auction - Litchfield, MN
 Closes March 24: Swift & Chippewa Counties, MN Land/Building Online Auction - Litchfield, MN
 Closes March 24: Lyndall Winter Farm Equipment Online Auction - Blue Grass, IA

VIEW ALL AUCTIONS AT SteffesGroup.com

West Fargo, ND | Grand Forks, ND | Waiford City, ND | Litchfield, MN | Mt. Pleasant, IA | Ames, IA | Mason City, IA | Sioux Falls, SD | Lexington, NE
 701.237.9173 | 701.203.8400 | 701.580.2426 | 320.693.9371 | 319.385.2000 | 515.432.6000 | 641.423.1947 | 712.477.2144 | 308.217.4508

Please join us!



Steffes Group, Inc.
 2245 East Bluegrass Road,
 Mt. Pleasant, IA 52641



PRESORTED MARKETING US POSTAGE PAID PERMIT #315 FARGO ND

UTV

2012 Polaris Sportsman 550 EFI, 1,434 miles, 181 hrs., 4x4, 550 cc, automatic, front storage compartment, front winch, alum. wheels, VIN 4XAZN5EA2CA53399

TRAILER

Neck Over 5th wheel, 6'x24' (Seller states needs electrical work)

VEHICLES

2003 Chevrolet Impala, VIN 2G1WF52E039392723
 2002 Chevrolet 1500, ext. cab, 4WD, cloth interior

SKID STEER TRACKS

Bobcat, over-the-tire skid steer tracks, 15"

NEW SKID STEER ATTACHMENTS

Patriot, HD brush mower, 72"
 Patriot, HD brush mower, 80"
 Patriot, rock & brush grapple, 84"
 Patriot, rock & brush grapple, 80"
 Patriot, rock & brush grapple, 75"
 Patriot, rock & brush grapple, 66"
 Patriot, root grapple, 70"
 Patriot, rock bucket, 84"
 Patriot, rock bucket, 80"
 Patriot, rock bucket, 75"
 Patriot, rock bucket, 66"
 (2) Patriot, pallet fork ext., 84"
 (2) Patriot, receiver hitch
 (4) Patriot, quick attach. plate, weldable

HAY RAKES

Enorossi, v-rake, 8-wheel
 Vermeer Twin Rake, 10' hyd. drive, pull-type, 4-bar, hyd. drive, hyd. raise/lower, gauge wheels, 15" tires, S/N 225

MOWER CONDITIONER

1998 John Deere 925, mower conditioner, 540 PTO

ROUND BALER

John Deere 566, 540 PTO, sells w/John Deere Bale Trak Plus monitor (S/N 03660), S/N E00566X119329

HAYRACKS

Hay Rack, 7'x15'
 Hay Rack, 8'x15'

FORAGE CHOPPER & WAGON

(2) International 720, forage choppers, sells w/hay head & corn head, 2-row narrow, running gear, hoist
 Gehl, chopper box, wagon type, 540 PTO, dual apron chains, wood sides & floor, 3-drum chopper, 18' box, 11L-15 tires, S/N 15777

BULK FEED BIN

2-Ton Bulk Feed Bin

MIXER WAGON

Patz 4380 TMR, mixer wagon, hyd. feed gate, hyd. tilt ramp, scales, side ladder, Avery Weigh-Tronix scale box, 540 PTO, 385/65R22.5 tires, S/N 40-38T-1334-JH

STALK CHOPPER

John Deere, rotary cutter, 15', 1000 PTO, pull-type, hyd. cyl. raise, chain rock guard, 7.60-15 tires, S/N 512218F

LIVESTOCK CHUTE & CATCHER

Mobile Cattle Chute, center divider, folding side gates, hyd. lift, 15" tires
 UTV Calf Catcher

NEW CORRAL PANELS

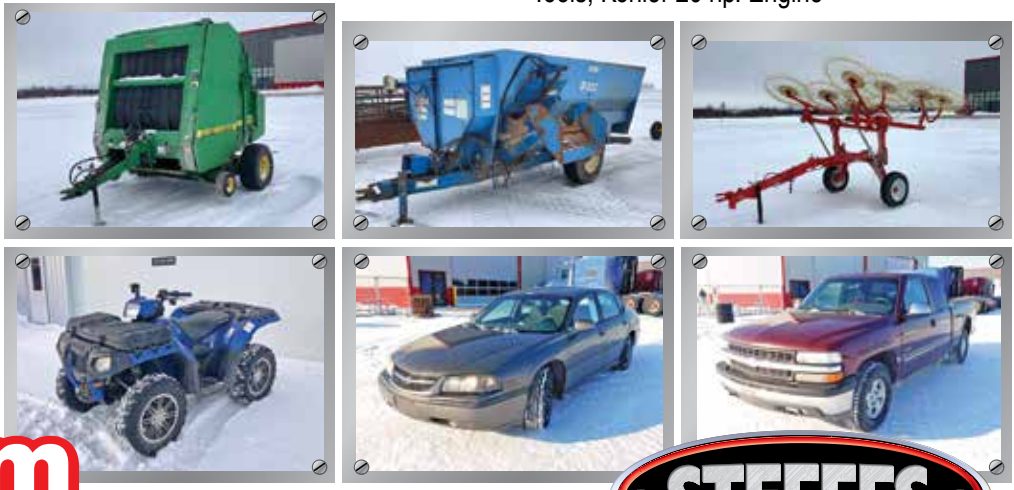
(40) 10' Interlocking Corral Panels

NEW CONTINUOUS FENCING

(120) 20' 6-Bar Continuous Fence Panels

OTHER EQUIPMENT

(16) John Deere Suitcase Weights, 47Kg; Tool Boxes, Craftsman Tools, & More; Used Railroad Ties & Guardrail; Various Shop Tools; Kohler 20 hp. Engine



Spring 2021 UPCOMING STEFFES GROUP AUCTIONS

Tom & Jeani Smith Farm Retirement Auction
 Closes: Tuesday, March 23, 1PM
 Hartford, IA

TIMED ONLINE

LIVE ON-SITE

TLM Farms, Inc. Retirement Auction
 Wednesday, March 24, 10AM
 Duncombe, IA

Ron & Mary Smith Farm Retirement & Firearms Auction
 Thursday, March 25, 11AM
 DeWitt, IA

LIVE ON-SITE

SteffesGroup.com



Contact auctioneers for owner information, new consignments, or changes at 319.385.2000.